

ELEVATORS MOTORS CORPORATION

Deformation: 1000 $\mu\epsilon$



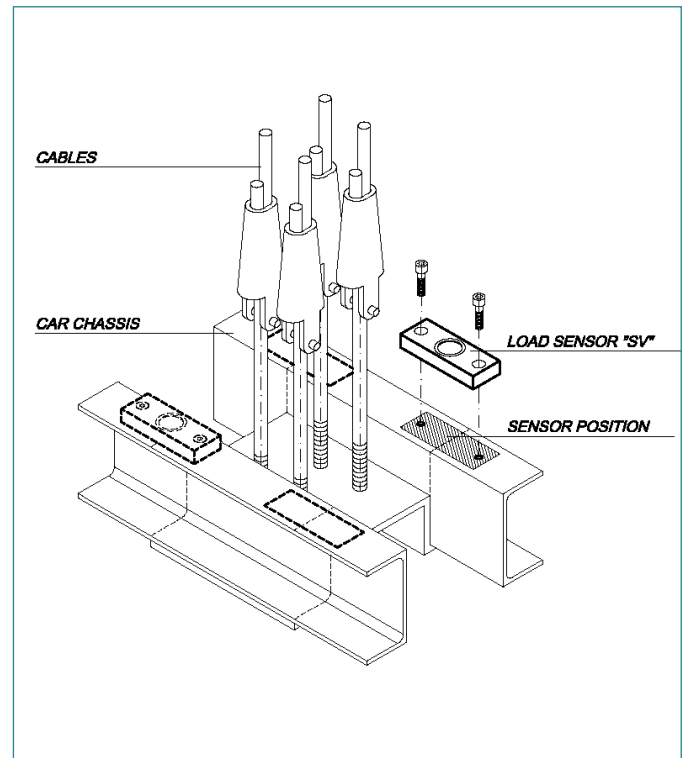
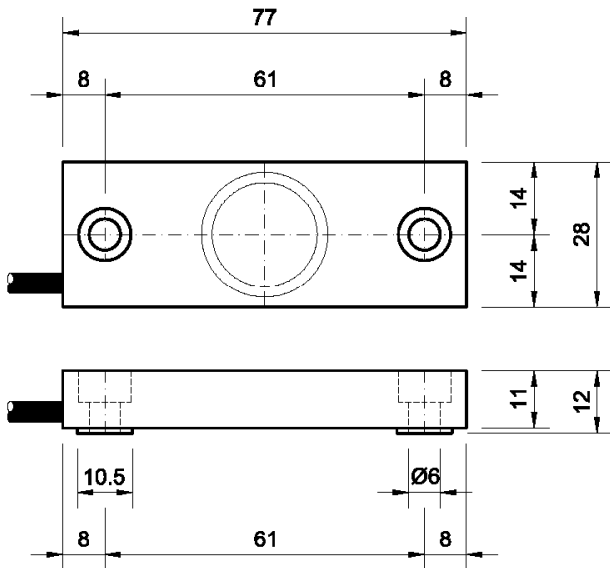
SV 1000

- **Load weighing** system especially designed to measure the crosshead deformation of the traction elevator.
- Made of high resistance aluminium material with anti-corrosion treatment.
- **Field of application:** On the elevator crosshead or also could used to measure deformation in steel beams for the silos level, tanks deposits, chutes, etc.

Connection 4 wires

Excitation +	Red	Signal +	Green
Excitation -	Black	Signal -	White

General dimensions



Technical Characteristic

Sensibility	1 (mV/V)
Tension of excitation	<12V
Zero Balance	<10% F.E.
Non-linearity	<0.15% F.E.
Non-repeatability	<0.15% F.E.
Combined error	<0.20% F.E.
Hysteresis	<0.02% F.E.
Input resistance	350 Ω \pm 2 Ω
Output resistance	350 Ω \pm 2 Ω
Insulation resistance....(V. Test =100V)	>5.000 Ω 10 ⁶ Ω
Maximum work load	150% F.E.
Load limit without lost of characteristic	200% F.E.

ELEVATORS MOTORS CORPORATION

80 Carolyn Boulevard. Farmingdale, NY 11735-1525

Phone (631) 293-4220. Fax (631) 293-2714. E-mail: info@elevatormotors.com