



ELEVATORS MOTORS CORPORATION

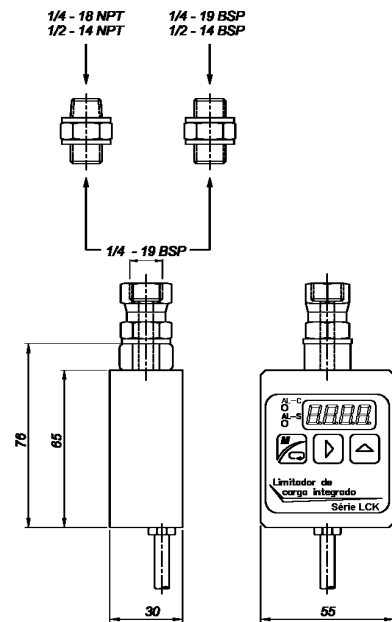
LOAD WEIGHING DEVICE FOR HYDRAULIC ELEVATORS



CHD-100

Digital Pressure Sensor

- Digital Pressure Sensor mod. CHD-100 with the integrated circuits has been developed to measure and to control the pressure in the hydraulic elevators.
- Measure range of 0 to 100 bar.
- 2 Relays of alarm.
- Calibrated in the factory. No need to use any well-known weight to calibrate it.
- Display of 4 digits to visualize the pressure.



Dimensions in mm

Connection

Red	Positive power supply (24-48 Vdc)
Black	Negative power supply
Violet/Blue	Relay contact of Complete (AL-C) 3A
Pink/Brown	Relay contact of Overload (AL-S) 3A
Gray/White	Hold 24-220 Vac/Vdc
Yellow	Earth
Green	Not connected

Technical Characteristic

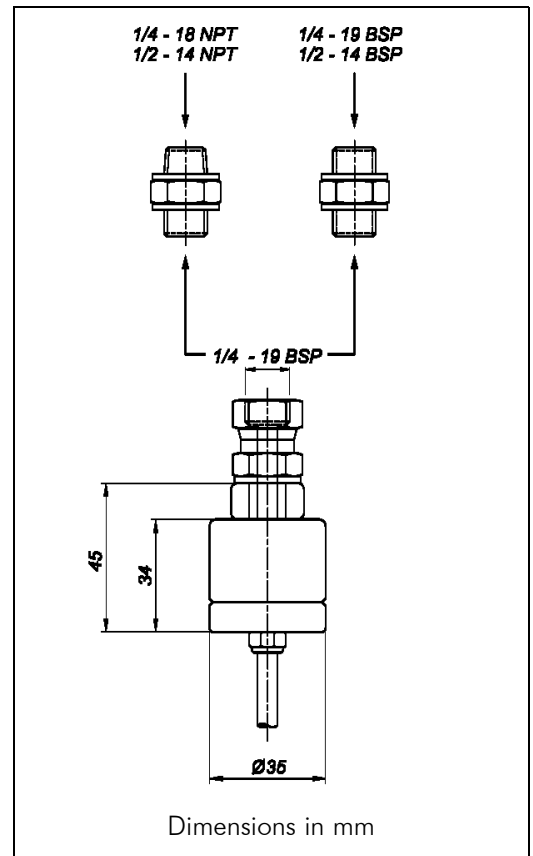
Full scale	100 bar
Non linearity	<0.5 % F.E.
Power supply	24-48 Vdc
Hysteresis	<0.1 % F.E.
Combined error	<0.2 % F.E.
Insulation resistance....(V. Test = 100V)	>5.000x10 ⁶ Ω
Maximum work load	150 % F.E.
Load limit without lost of characteristic	200 % F.E.

- Pressure sensor model CH-100, suitable to control the load in the hydraulic elevators. It's simple and economy, can be connected to any unit control of the series VK.
- Measure range of 0 to 100 bar.
- Calibrated in the factory. If connected to the unit control VK, there is no need to use any well-known weight in the moment of installation.



Pressure Sensor

4 wires connections	
Excitation +	Red
Excitation -	Black
Signal +	Green
Signal -	White



Technical Characteristic	
Full scale	100 bar
Non linearity	<0.5 % F.E.
Power supply	10 V (máx.)
Hysteresis	<0.1 % F.E.
Combined error	<0.2 % F.E.
Insulation resistance....(V. Test = 100V)	>5.000x10 ⁶ Ω
Maximum work load	150 % F.E.
Load limit without last of characteristic	200 % F.E.