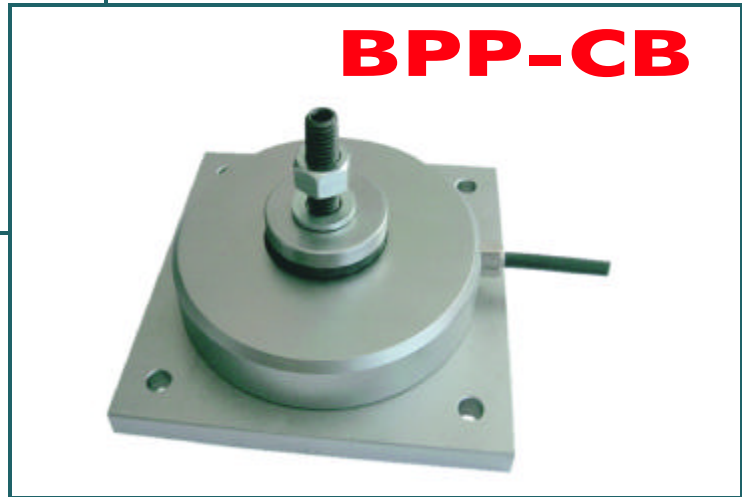
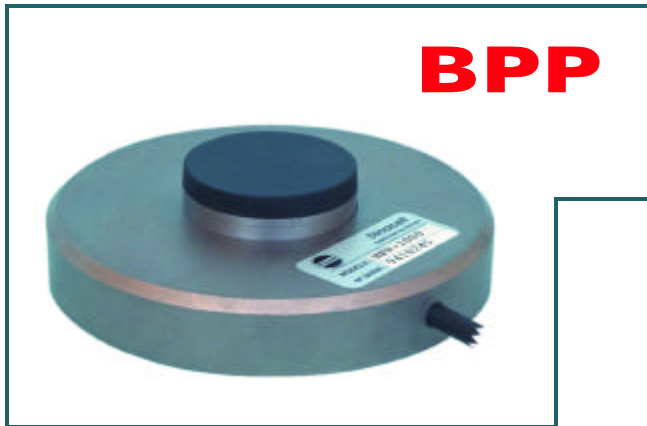




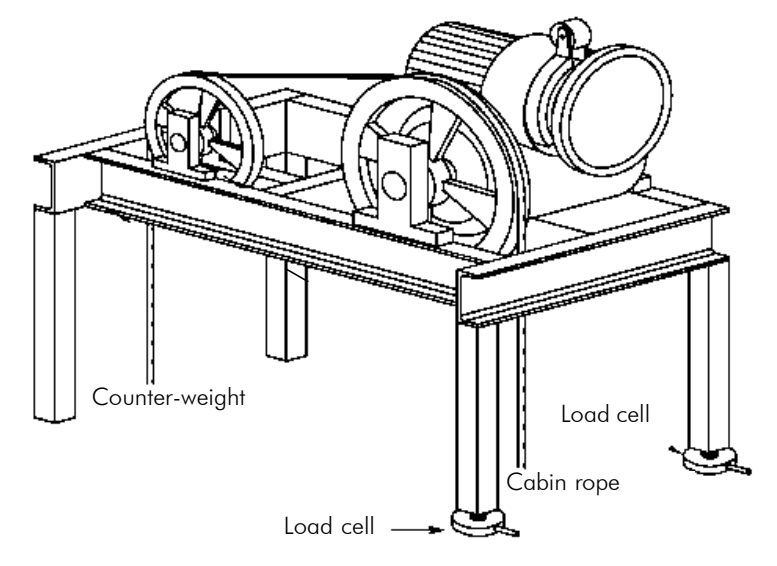
ELEVATORS MOTORS CORPORATION



Capacities
1.500 kg
3.000 kg
5.000 kg

- Load cells specially designed for installation under motor bedframe.
- This cell is manufactured in different capacities from 1.500 kg to 5.000 kg.
- The model BPP and BPP-CB equipped with silent-block pad to avoid the transfer of vibrations.
- Connected to the unit control VK-3, they can installed up to 4 cells in parallel.
- As it is indicated in the diagram of installation , the assembly of 2 cells is recommended to obtain a high precision.

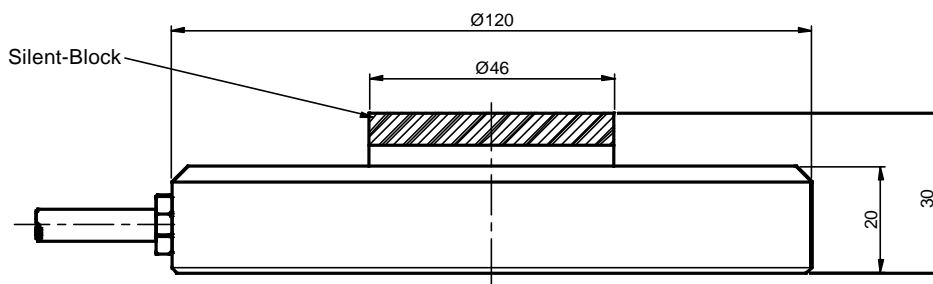
Diagram of installation



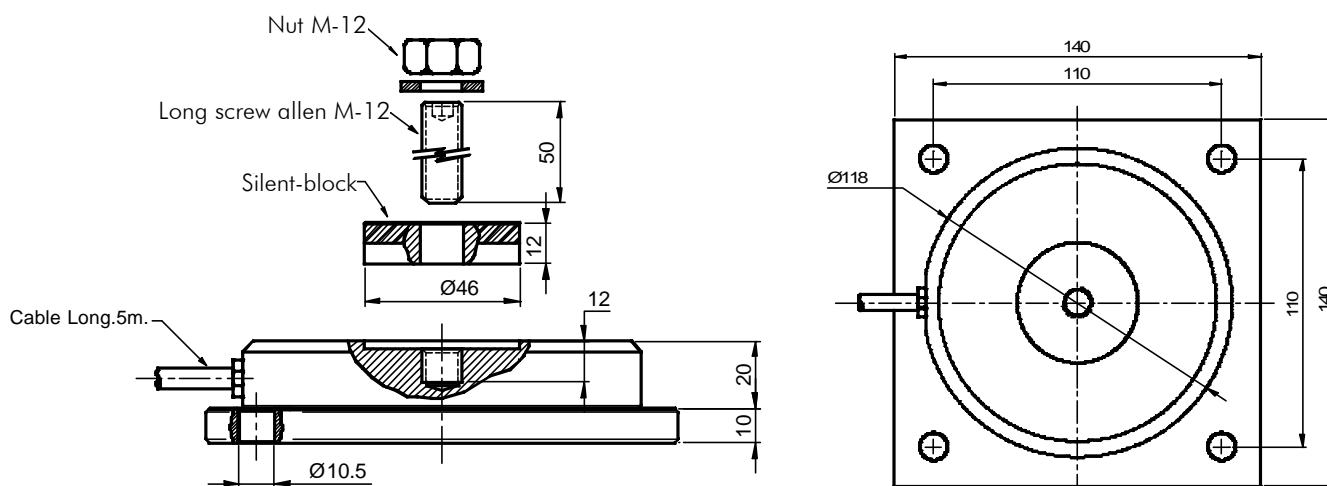
4 Threads connection

Excitation +	Red
Excitation -	Black
Signal +	Green
Signal -	White

Dimensions of BPP & the BPP-CB in mm



Mod. BPP



Mod. BPP-CB

Technical Characteristic

Tension of excitement	5...10V (máx. 15V)
Non linearity	<0.15 % F.E.
Non repeatability	<0.15 % F.E.
Hysteresis	<0.05 % F.E.
Combined error	<0.2 % F.E.
Input resistance	350 $\Omega \pm 2$
Output resistance	350 $\Omega \pm 2$
Insulation resistance....(V. Test =100V)	>5.000x10 ⁶ Ω
Maximum work load	150 % F.E.
Load limit without lost of characteristic	200 % F.E.

ELEVATORS MOTORS CORPORATION

80 Carolyn Boulevard. Farmingdale, NY 11735-1525

Phone (631) 293-4220. Fax (631) 293-2714. E-mail: info@elevatormotors.com